

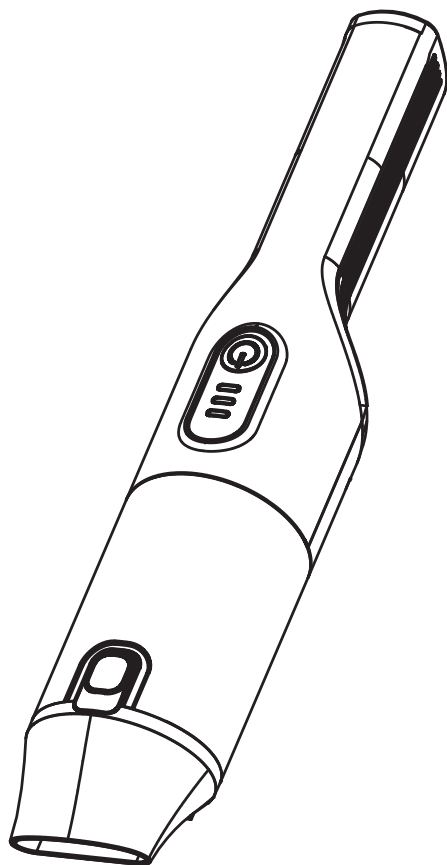


# USER MANUAL

## CORDLESS HANDHELD VACUUM

HH12

USER MANUAL



DIRTDEVIL.CO.UK

0333 400 0653

# WELCOME!

Congratulations on your purchase. Use this user manual to learn about your new vacuum's great features. Find out how to assemble, use and maintain your vacuum cleaner in this easy to follow manual.

## PLEASE READ CAREFULLY AND KEEP FOR FUTURE REFERENCE

If you have any questions, please email [info@dirdevil.co.uk](mailto:info@dirdevil.co.uk) to get in contact.

# CONTENTS

---

<b>Safety instructions</b> .....	<b>3</b>
<b>Getting to know your Dirt Devil vacuum cleaner</b> .....	<b>7</b>
<b>Assembling your vacuum cleaner</b> .....	<b>8</b>
<b>Using your vacuum cleaner</b> .....	<b>9</b>
<b>Maintaining your vacuum cleaner</b> .....	<b>10</b>
Cleaning the filters	
<b>Troubleshooting</b> .....	<b>11</b>
<b>Specification</b> .....	<b>12</b>
<b>Parts list and contact details</b> .....	<b>16</b>

# IMPORTANT SAFETY INSTRUCTIONS

## FOR INDOOR USE ONLY

---

### WARNING

When using an electrical appliance, basic precautions should always be followed, including the following:

### READ ALL INSTRUCTIONS BEFORE USING THIS APPLIANCE

Failure to follow the warnings and instructions may result in electric shock, fire and/or serious injury.

### TO REDUCE THE RISK OF FIRE, ELECTRIC SHOCK, OR INJURY:

#### USING THE VACUUM CLEANER

- **DO NOT** use the vacuum cleaner outdoors. For household use only. Store indoors.
- **DO NOT** vacuum up hard or sharp objects such as glass, nails, screws or coins that could damage the vacuum cleaner.
- **DO NOT** vacuum liquids, use on wet surfaces or immerse in water as this could cause damage to the vacuum cleaner.
- **DO NOT** vacuum anything flammable, burning or smoking such as cigarette ends, matchsticks or ashes.
- **DO NOT** use the vacuum cleaner to clean your pets or any animal.
- **DO NOT** point the vacuum cleaner at persons or animals

when in operation.

- Keep the vacuum cleaner moving over the carpet surface at all times to avoid damaging the carpet fibres.
- Keep the vacuum cleaner, charging stand and accessories away from hot surfaces like hobs, cookers or microwave ovens.
- **DO NOT** use the vacuum cleaner or charging stand if either has been dropped, damaged, left outdoors, submerged in water or is not working as it should.
- **DO NOT** use the vacuum cleaner in an enclosed space filled with explosive, toxic or flammable vapours.
- **DO NOT** insert any objects into the vacuum cleaner.
- This vacuum cleaner is designed for domestic use only.

# IMPORTANT SAFETY INSTRUCTIONS

## FOR INDOOR USE ONLY

---

### **BATTERY, CHARGING CORD AND PLUG**

- Before turning on, ensure the electrical voltage and frequency of the charging stand corresponds to those indicated on the rating label
- When charging the vacuum cleaner it must be switched off.
- **DO NOT** replace the battery with a non-rechargeable battery.
- **DO NOT** operate with a damaged charging stand. If the charging stand is damaged, it must be replaced by the same type.
- When unplugging the charging stand from the wall socket, pull by the plug, not the cord, holding the socket with your other hand.
- **DO NOT** use with a damaged charging cord or plug.
- **DO NOT** trap the charging cord when using the charging stand. Pay attention to where the cord is to prevent any danger of tripping over it.
- Take care that the charging cord is not kinked, pinched, pulled around sharp corners or run over.

- Ensure the charging cord does not come into contact with heat sources or become a trip hazard.
- If the charging stand is damaged, it must be replaced by a qualified professional in order to avoid any hazards.
- Only use the charging stand in a clean and dry environment.
- Only use the vacuum cleaner with the accessories supplied, such as the charger, charging stand, battery and tools.
- Always stand the appliance on a table or flat surface.

### **AIRFLOW, FILTERS AND ATTACHMENTS**

- **DO NOT** use without filters and dust bin in place.
- Always turn off the vacuum cleaner before changing filters or attachments.
- If when using, suction appears to be reduced, turn off the vacuum cleaner and clean all of the filters.
- **DO NOT** use if the airflow is restricted. If the air paths or any extensions become blocked, turn off the vacuum cleaner. Clear all obstructions

# IMPORTANT SAFETY INSTRUCTIONS

## FOR INDOOR USE ONLY

---

before powering on again.

- Use genuine Dirt Devil filters and attachments only. Using non-genuine accessories may cause damage to the vacuum cleaner.
- When cleaning filters, ensure that they are completely dry and undamaged before replacing them back into the vacuum cleaner.

### PERSONAL SAFETY

• This machine is not intended to be used or cleaned by persons with reduced physical, sensory or mental capabilities, or lack of experience or knowledge, unless they have been given instructions concerning the machine by a person legally responsible for their safety. They should be supervised whilst using the machine. Children shall not use, clean or play with this machine, which when not in use should be secured out of their reach. Keep the vacuum cleaner out of reach of children.

• **DO NOT** attempt to open the vacuum cleaner or the charging stand or replace the charging cord yourself. Always

have repairs carried out by a professional.

- Packing material must not be used for playing. There is a danger of suffocation.
- Never leave the vacuum cleaner switched on or connected to the mains without supervision.
- Keep the floor nozzle away from hair, face, fingers, uncovered feet or loose clothing when the vacuum cleaner is working or plugged in.

• **DO NOT** touch or use the vacuum, charging stand, charging cord or plug with wet hands.

### USER MANUAL GUIDANCE

- Keep this user manual in a safe place.
- Failure to comply with this user manual can lead to serious injuries or damage to the vacuum cleaner. We take no responsibility for damage due to failure to comply with this user manual.

# WHAT TO EXPECT FROM YOUR USER MANUAL

Your user manual contains lots of handy information about your Dirt Devil appliance. Please have a read and keep it somewhere safe for future reference. Here's what you can expect from the different user manual sections

## GETTING TO KNOW YOUR DIRT DEVIL APPLIANCE



The diagrams of your appliance in this manual allow you to familiarise yourself with your machine. Doing so will make the information in the rest of the user manual clearer and help you to source the right replacement spare parts or accessories.

## ASSEMBLING YOUR APPLIANCE



When you first take your appliance out of its box, there will be some simple setup required to get it ready to use. The information in this section tells you the steps you need to take before using your new machine for the first time.

## USING YOUR APPLIANCE



It's important to use your machine correctly to avoid any damage to either the appliance itself or your floors. Get to know features, settings and the dos and don'ts of using your machine so it's cleaning to its maximum potential.

## MAINTAINING YOUR APPLIANCE



Every appliance needs a bit of routine maintenance from time to time. Learning how to recognise the different parts of your machine to maintain and how to look after them will enable your appliance to last longer.

## TROUBLESHOOTING



If you encounter any issues with your appliance, the troubleshooting section in this user manual is the first place you can turn. Here you will find information about potential problems as well as the solutions to resolve them.

## SPECIFICATION



If you want to know any of the specifics about your machine including model number, weight, capacity and input voltage, head over to the specification page in this user manual for a full list.

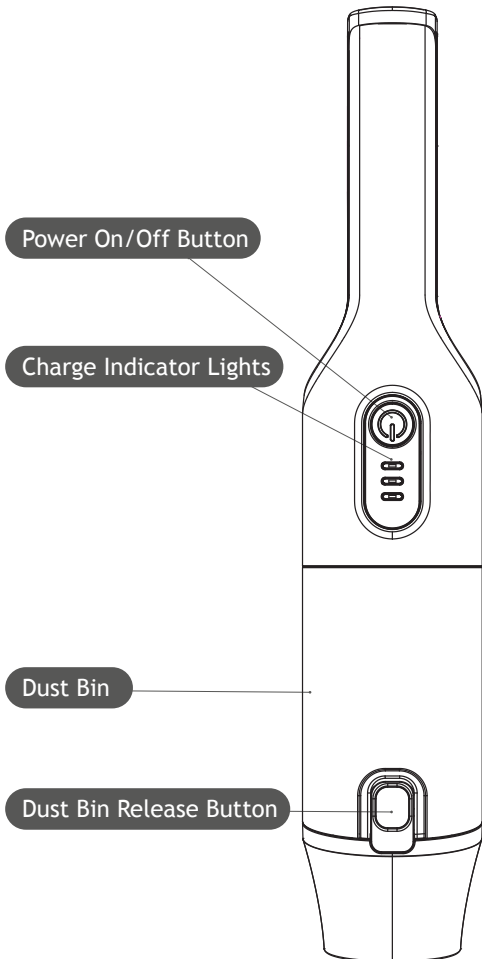
## PARTS LIST AND CONTACT DETAILS



Need a replacement part for your machine? The list in this manual shows you all of the spare parts available for your model. You'll also find our full contact information here in case you need to get in touch for any reason.

# GETTING TO KNOW YOUR VACUUM CLEANER

## FEATURES



### SPARE PARTS

#### Charger

Part no. DVLS00011

#### Charging stand

Part no. DVLS00012

#### Brush tool

Part no. DVLS00013

#### Crevice tool

Part no. DVLS00015

#### Bin assembly

Part no. DVLS00016

#### Sponge filter

Part no. DVLS00017

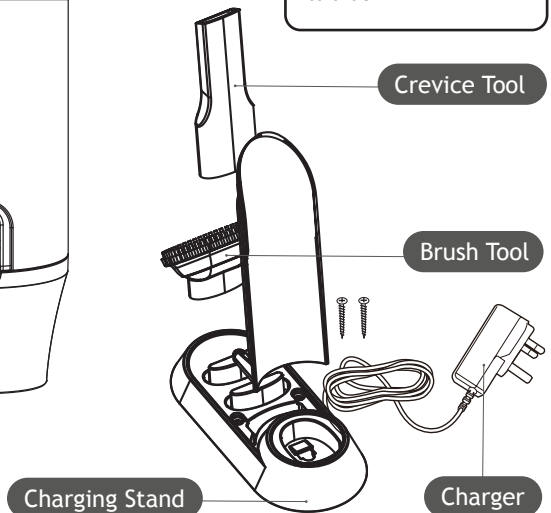
#### Inner filter

Part no. DVLS00018

#### Filter cover

Part no. DVLS00019

Visit [dirtdevil.co.uk](http://dirtdevil.co.uk) to order



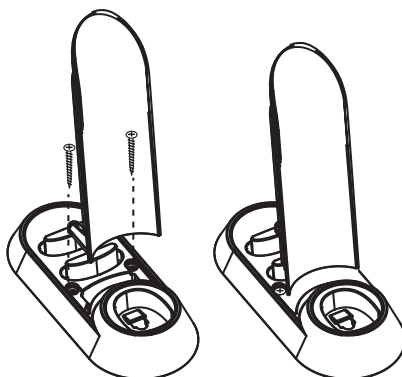
# ASSEMBLING YOUR VACUUM CLEANER

---

## ATTACHING THE APPLIANCE HOLDER TO THE CHARGING STAND

Your charging stand will come with a separate appliance holder to support your Cordless Handheld Vacuum whilst it is charging in the stand. This requires some simple assembly.

1. Slot the appliance holder into the charging stand.
2. Screw the appliance holder firmly in place using the screws provided.
3. Place your Cordless Handheld Vacuum into the charging stand to ensure it is supported securely.



## CHARGING YOUR VACUUM CLEANER BEFORE FIRST USE

Before use, we recommend that your vacuum cleaner is fully charged for between 4 to 5 hours. There will be some charge in the vacuum when you first purchase it, so it may not take the full amount of time to charge initially. **Note:** You should not charge the vacuum cleaner overnight or leave it unattended when charging.

1. Insert the charger plug into the mains.
2. Insert your Cordless Handheld Vacuum into the charging stand. Always make sure that the vacuum is turned off before putting it into the stand.
3. Once the vacuum has made contact with the charging stand, the blue charge indicator lights will turn on and will keep flashing.
4. To ensure your vacuum is always ready, it should be left charging when not in use. It is normal for the adaptor to become warm during charging.



# USING YOUR VACUUM CLEANER

---

## CHARGE INDICATOR LIGHTS

The charge indicator lights show that your vacuum cleaner is charging and they also display the charging status.

- When charging the appliance, the charge indicator lights will light up blue and keep flashing.
- When fully charged, the charge indicator lights will stay blue.
- When using the appliance, the charge indicator lights will be blue.
- When the battery is weak, the last charge indicator light will flash blue.

## USING YOUR CORDLESS HANDHELD VACUUM

**Note:** Do not connect to the charging stand when using the appliance. You should regularly check that the nozzle is clean, as any foreign objects may scratch or cause damage to sensitive floors.

1. Attach the appropriate tool onto the vacuum cleaner before use.
2. Start the device by pushing the power on/off button.
3. When you have finished cleaning, push the power on/off button to turn off the vacuum cleaner.

## EMPTYING THE DUST BIN

**Note:** Ensure your vacuum cleaner is switched off before emptying the dust bin.

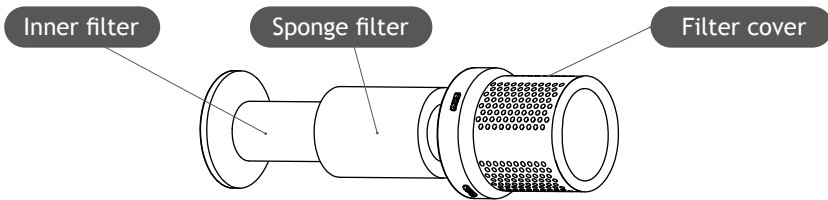
1. Remove the dust bin by pressing the dust bin release button.
2. Allow the debris to fall out and tap the appliance gently to remove any stubborn dirt if required.
3. Close the lid.

# MAINTAINING YOUR VACUUM CLEANER

---

## CLEANING THE FILTERS

**Note:** Ensure your vacuum cleaner is switched off before cleaning the filters.



1. Empty the dust bin by following the steps in the “Emptying the Dust Bin” section.
2. Remove the dust bin by twisting it clockwise and pulling it away from the main body of the machine.
3. Remove the filter cover by twisting it anticlockwise then gently pulling it away from the main body. Remove the filter.
4. The filter comes in two parts, a sponge filter and an inner filter. Remove any excess dust and debris from both parts by shaking them, then rinse in warm water.
5. Remove any remaining dust from the filter cover by brushing it away with a soft, dry brush.
6. Leave the parts to dry for 24 hours or until they are completely dry. Do not use any appliances such as a tumble dryer or hairdryer to aid with drying as these may damage the parts.
7. Refit both filters into the filter cover and reattach to the main body by twisting clockwise.
8. Reattach the dust bin to the main body of the vacuum cleaner by twisting anticlockwise.

# TROUBLESHOOTING

---

## WARNING

To reduce the risk of shock and unintended operation, turn off power and unplug from the mains before servicing.

Problem	Solution
The suction power is reduced.	<ol style="list-style-type: none"><li>1. Empty the dust bin and clean the filters.</li><li>2. Check for blockages in the crevice or brush tool and remove them.</li></ol>
The vacuum cleaner has stopped or isn't working.	<ol style="list-style-type: none"><li>1. Charge the vacuum cleaner. (Check the mains socket works and the switch is turned on.)</li><li>2. Check for blockages and remove if found.</li></ol>

## CONTACT US

In any other case or if the solution explained above did not solve the problem, please contact us at [info@dirtdevil.co.uk](mailto:info@dirtdevil.co.uk)

# SPECIFICATION

---

Model	HH12
Power	90W
Capacity	0.3L
Weight	0.9kg
Runtime	20min
Charge time	4-5 hours
Battery type	11.1V Li-ion
Sound	75dB
Dimensions (LxWxH)	40.4cm x 7cm x 8cm
Filter type	Sponge
Input Voltage	220-240V
Current	50Hz

**WARNING:** The above data has been supplied by the manufacturing plant and tested in laboratory conditions. The actual situation may vary according to the use environment. All product specifications are subject to change without notice.

## DISPOSAL

Waste electrical products should not be disposed of with household waste. Please recycle where facilities exist. Check with your local authority for recycling advice.

## UNBOXING

During transportation, packaging was used to protect the appliance against any damage. After unboxing, please dispose of all packaging in a way that will not cause damage to the environment.

IMPORTANT! During unboxing, keep the packaging materials (polyethylene bags, polystyrene pieces, etc.) out of reach of children.

### **This appliance complies with the following UK & European Directives:**

Electrical Equipment (Safety) Regulations 2016

Electromagnetic Compatibility Regulations 2016

Low Voltage Directive (LVD) 2014/35/EU

Electromagnetic Compatibility Directive (EMCD) 2014/30/EU











## SPARE PARTS



Replacement parts below are available for your appliance model.  
Please visit [dirtdevil.co.uk](http://dirtdevil.co.uk) to place your order.

### SPARE PARTS

#### Charger

Part no. DVLS00011

#### Charging stand

Part no. DVLS00012

#### Brush tool

Part no. DVLS00013

#### Crevice tool

Part no. DVLS00015

#### Bin assembly

Part no. DVLS00016

#### Sponge filter

Part no. DVLS00017

#### Inner filter

Part no. DVLS00018

#### Filter cover

Part no. DVLS00019

## VISIT DIRT DEVIL WEBSITE

[www.dirtdevil.co.uk](http://www.dirtdevil.co.uk)

## CONTACT US

0333 400 0653

[info@dirtdevil.co.uk](mailto:info@dirtdevil.co.uk)

Medco House,  
Connect Business Park,  
Bordesley Green Road,  
Birmingham,  
B9 4UA  
United Kingdom

**This appliance has a 1-year warranty as standard. To extend your warranty for 1 additional year, please visit [dirtdevil.co.uk](http://dirtdevil.co.uk) and register your appliance.**

Pictures are for illustration purposes only and may differ from the actual product. We are constantly striving to improve our products and the specifications contained herein are subject to change without notice. Made in China. DIRT DEVIL is a registered trademark of Techtronic Cordless GP and is used under licence by Connect Distribution Services Ltd. © All Rights Reserved.

Dirt Devil shall not be held liable for any damage caused by improper use of the product.

EF7W8CAU