

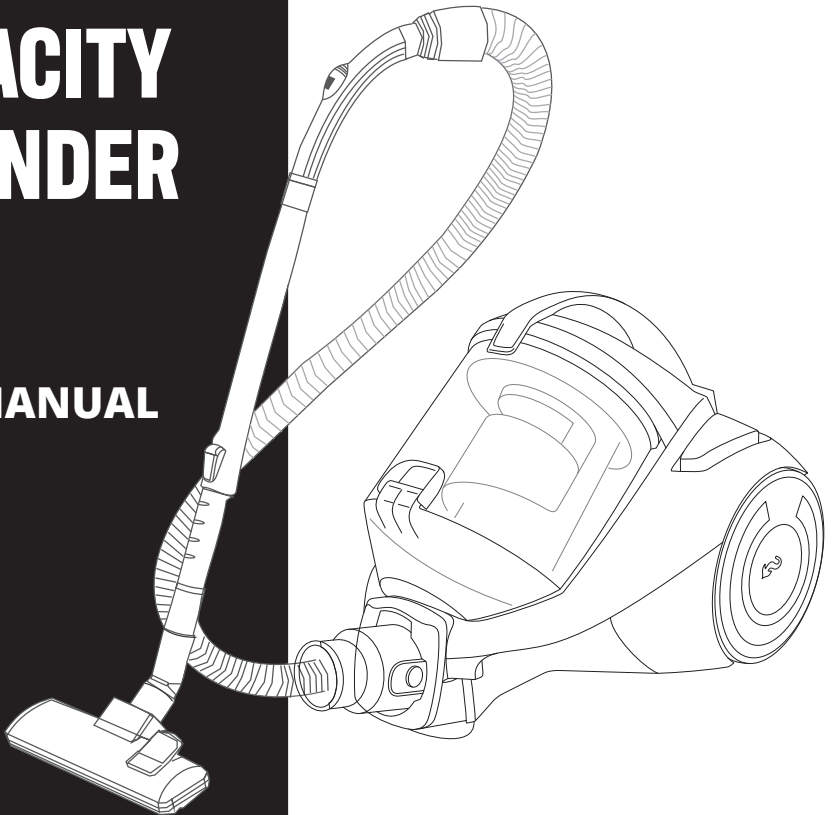


USER MANUAL

LARGE CAPACITY CYLINDER

CY09

USER MANUAL



DIRTDEVIL.CO.UK

0333 400 0653

WELCOME!

Congratulations on your purchase. Use this user manual to learn about your new vacuum's great features. Find out how to assemble, use and maintain your vacuum cleaner in this easy to follow manual.

PLEASE READ CAREFULLY AND KEEP FOR FUTURE REFERENCE

If you have any questions, please email info@dirdevil.co.uk to get in contact.

CONTENTS

Safety instructions	3
Getting to know your Dirt Devil vacuum cleaner	7
Assembling your vacuum cleaner	8
Using your vacuum cleaner	9
Maintaining your vacuum cleaner	10
Emptying bin and cleaning HEPA pre-motor filter	
Cleaning and replacing the HEPA post-motor filter	
Storage	
Troubleshooting	14
Specification	16
Parts list and contact details	20

IMPORTANT SAFETY INSTRUCTIONS

FOR INDOOR USE ONLY WARNING

When using an electrical appliance, basic precautions should always be followed, including the following:

READ ALL INSTRUCTIONS BEFORE USING THIS APPLIANCE

Failure to follow the warnings and instructions may result in electric shock, fire and/or serious injury.

TO REDUCE THE RISK OF FIRE, ELECTRIC SHOCK, OR INJURY:

USING THE VACUUM CLEANER

- **DO NOT** use the vacuum cleaner outdoors. For household use only. Store indoors.
- **DO NOT** vacuum up hard or sharp objects such as glass, nails, screws or coins that could damage the vacuum cleaner.
- **DO NOT** vacuum liquids, use on wet surfaces or immerse in water as this could cause damage to the vacuum cleaner.
- **DO NOT** vacuum anything flammable, burning or smoking such as cigarette ends, matchsticks or ashes.
- **DO NOT** use the vacuum cleaner to clean your pets or any animal.
- Keep the vacuum cleaner moving over the carpet surface at all times to avoid damaging the carpet fibres.
- Keep the vacuum cleaner and accessories away from hot surfaces like hobs, cookers or microwave ovens.
- Always unplug the vacuum cleaner immediately if it malfunctions.
- **DO NOT** use this vacuum cleaner if it has been dropped, damaged, left outdoors, submerged in water or is not working as it should.
- **DO NOT** use the vacuum cleaner in an enclosed space filled with explosive, toxic or flammable vapours.

IMPORTANT SAFETY INSTRUCTIONS

PLUG AND CORD

- **DO NOT** use with a damaged cord or plug.
- **DO NOT** pick up or pull the vacuum cleaner by the cord.
- Take care that the cord is not kinked, pinched, pulled around sharp corners or run over.
- Ensure the cord does not come into contact with heat sources or become a trip hazard.
- When unplugging the vacuum cleaner from the wall socket, pull by the plug, not the cord, holding the socket with your other hand.

AIRFLOW, FILTERS AND ATTACHMENTS

- **DO NOT** use without filters and bin in place.
- Always turn off and unplug the vacuum cleaner before changing filters or attachments.
- If when using, suction appears to be reduced, turn off and unplug the vacuum cleaner and clean all of the filters.
- **DO NOT** use if the airflow is restricted. If the air paths or the floor nozzle become

blocked, turn off and unplug the vacuum cleaner. Clear all obstructions before powering on again.

- Use genuine Dirt Devil filters and attachments only. Using non-genuine accessories may cause damage to the vacuum cleaner.
- When cleaning filters, ensure that they are completely dry and undamaged before replacing them back into the vacuum cleaner.

PERSONAL SAFETY

- This machine is not intended to be used or cleaned by persons with reduced physical, sensory or mental capabilities, or lack of experience or knowledge, unless they have been given instructions concerning the machine by a person legally responsible for their safety. They should be supervised whilst using the machine. Children shall not use, clean or play with this machine, which when not in use should be secured out of their reach. Keep the vacuum cleaner out of reach of children.

IMPORTANT SAFETY INSTRUCTIONS

- Packing material must not be used for playing. There is a danger of suffocation.
- Never leave the vacuum cleaner connected to the mains without supervision.
- Keep the floor nozzle away from hair, face, fingers, uncovered feet or loose clothing when the vacuum cleaner is working or plugged in.
- **DO NOT** use with wet hands.

USER MANUAL GUIDANCE

- Keep this user manual in a safe place.
- Failure to comply with this user manual can lead to serious injuries or damage to the vacuum cleaner. We take no responsibility for damage due to failure to comply with this user manual.

WHAT TO EXPECT FROM YOUR USER MANUAL

Your user manual contains lots of handy information about your Dirt Devil appliance. Please have a read and keep it somewhere safe for future reference. Here's what you can expect from the different user manual sections.

GETTING TO KNOW YOUR DIRT DEVIL APPLIANCE



The diagrams of your appliance on this page allow you to familiarise yourself with your machine. Doing so will make the information in the rest of the user manual clearer and help you to source the right replacement spare parts or accessories.

ASSEMBLING YOUR APPLIANCE



When you first take your appliance out of its box, there will be some simple setup required to get it ready to use. The information in this section tells you the steps you need to take before using your new machine for the first time.

USING YOUR APPLIANCE



It's important to use your machine correctly to avoid any damage to either the appliance itself or your floors. Get to know features, settings and the dos and don'ts of using your machine so it's cleaning to its maximum potential.

MAINTAINING YOUR APPLIANCE



Every appliance needs a bit of routine maintenance from time to time. Learning how to recognise the different parts of your machine to maintain and how to look after them will enable your appliance to last longer.

TROUBLESHOOTING



If you encounter any issues with your appliance, the troubleshooting section in this user manual is the first place you can turn. Here you will find information about potential problems as well as the solutions to resolve them.

SPECIFICATION



If you want to know any of the specifics about your machine including model number, weight, capacity and input voltage, head over to the specification page in this user manual for a full list.

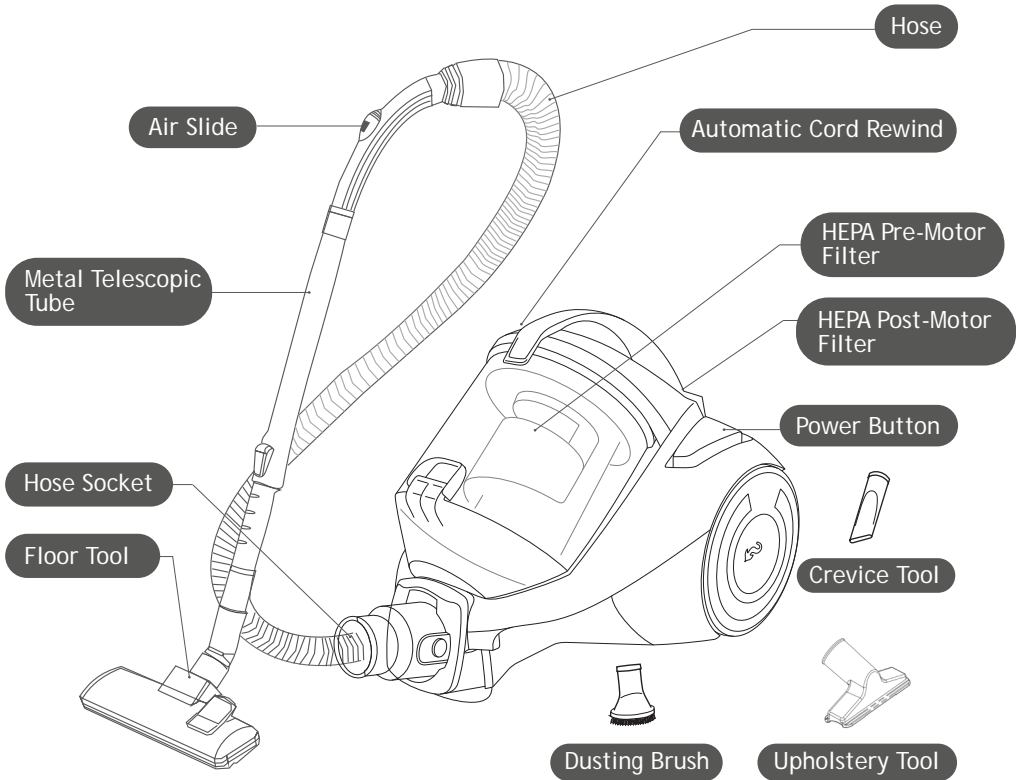
PARTS LIST AND CONTACT DETAILS



Need a replacement part for your machine? The list on this page shows you all of the spare parts available for your model. You'll also find our full contact information here in case you need to get in touch for any reason.

GETTING TO KNOW YOUR VACUUM CLEANER

FEATURES



SPARE PARTS

Upholstery tool

Part no. DVLS00079

Dusting brush

Part no. DVLS00088

Floor tool

Part no. DVLS00089

Hose

Part no. DVLS00090

Metal telescopic tube

Part no. DVLS00091

HEPA pre-motor filter

Part no. DVLS00093

HEPA post-motor filter

- Part no. DVLS00098

Crevice tool

- Part no. DVLS00101

Visit dirtdevil.co.uk to order



ASSEMBLING YOUR VACUUM CLEANER

ASSEMBLING YOUR VACUUM CLEANER

Before assembling or disassembling the appliance, ensure it is not plugged into the mains supply and is switched off.

Make sure that the attachment you are fitting is suitable for the surface you are cleaning. For example, never use a brush with rotating bristles to clean floors or objects that may not be able to withstand the treatment without damage. Observe all recommendations and care information.

Please note, you might have to twist the parts when connecting them so they are securely in place.

To assemble your appliance:

1. Connect hose and appliance as shown in figure 1.
2. Insert the appropriate accessory onto the handle depending on what type of surface you want to vacuum as shown in figure 2.
3. For carpet cleaning, use the floor tool with switch position as shown in figure 3.
4. For hard floor cleaning, use the floor tool with switch position as shown in figure 4.
5. Ensure that the air slide is closed as shown in figure 5.
6. If you use the telescopic tube, adjust length as shown in figure 6.

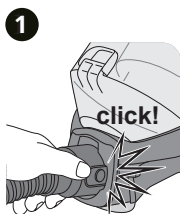


Figure 1

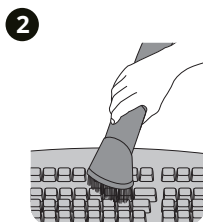


Figure 2

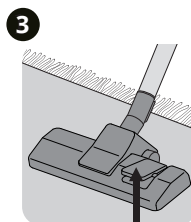


Figure 3

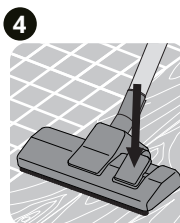


Figure 4

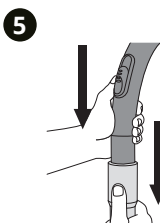


Figure 5

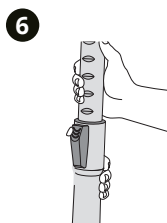


Figure 6

USING YOUR VACUUM CLEANER

USING YOUR VACUUM CLEANER

WARNING: Risk of injury! Check appliance and power cord before each use. A damaged appliance must never be used due to danger of electric shock!

CAUTION: Only use the appliance with all filters undamaged, in dry condition and correctly fitted. Make sure not to obstruct the metal telescopic tube, the hose or other openings.

1. Pull the cord out of the appliance as shown in figure 1.
2. If the red marking is visible as shown in figure 2, retract the cord by pressing the cord retraction button to pull in the cord up to the yellow mark as shown in figure 3. Otherwise, the power cord may be damaged.
3. Insert the plug into a mains socket as shown in figure 4.
4. Switch on the appliance using power button switch as shown in figure 5.
5. If whilst vacuuming objects such as curtains get sucked in, open the air slide shown in figure 6. This vent must be completely closed for vacuum cleaning. However, if the floor tool has become stuck to the floor, you can reduce the suction power by opening the air slide.
6. Vacuum dust as shown in figure 7.

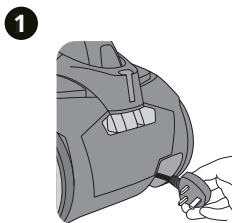


Figure 1



Figure 2

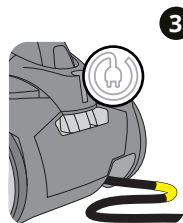


Figure 3

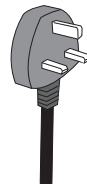


Figure 4

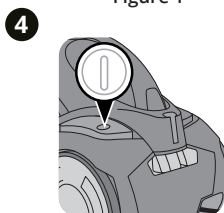


Figure 5

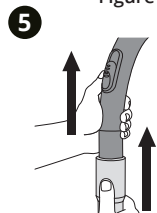


Figure 6



Figure 7

WARNING:
Risk of injury! Make sure that you always stand on a higher level than the appliance, especially when cleaning stairs.

MAINTAINING YOUR VACUUM CLEANER

EMPTYING BIN AND CLEANING HEPA PRE-MOTOR FILTER

CAUTION: Switch off the appliance before removing the dust bin. This will prevent dust from damaging the appliance. The filter parts are washable, but cannot be cleaned in dishwashers or washing machines. Do not use cleaning agents or brushes with hard bristles to clean the filter parts.

The dust bin has to be emptied and cleaned regularly. Otherwise emptying it will get harder or smells and bacteria might develop, depending on what you have vacuumed up. Therefore, it is best to empty the dust bin after each vacuuming session. Clean the dust bin at least once every 3 months, before prolonged storage and before transporting the appliance.

1. Switch off the appliance as shown in figure 1.
2. Pull the plug out of the plug socket as shown in figure 2.
3. Remove the dust bin as shown in figure 3.
4. Empty the dust bin as shown in figure 4. You can dispose of the contents of the dust bin with your domestic waste as long as the dirt does not contain any substances prohibited from domestic waste.
5. Take this opportunity to also check the filter parts (HEPA pre-motor filter and filter unit) in the dust bin as shown in figure 5 - figure 9.
6. If the filter parts (HEPA pre-motor filter and filter unit) are dirty, clean them under cold or lukewarm running water until all dirt has gone as shown in figure 10.
7. Let the filter parts dry completely (for approximately 24 hours at room temperature) after wet cleaning as shown in figure 11. Do not re-install them until they are completely dry.
8. Insert the filter parts again as shown in figure 12.
9. The filter elements are designed so that they can only be fully inserted if in the right position. Nevertheless, it is helpful if you align the filter unit properly with the dust bin as shown in figure 13 and 14 before inserting it. Then lower the filter unit completely into the dust bin until the three noses of the dust bin engage with the respective recesses of the filter unit. Do not use force upon insertion.
10. Replace damaged or deformed filters immediately as shown in figure 15. (See page 5 or the back cover for replacement part information.)
11. If the dust bin lid shown in figure 16 will not shut properly, you have to take the parts out again and put them back in.
12. Re-insert the dust bin as shown in figure 17. You must be able to feel and hear it click into place.

MAINTAINING YOUR VACUUM CLEANER

EMPTYING BIN AND CLEANING HEPA POST-MOTOR FILTER

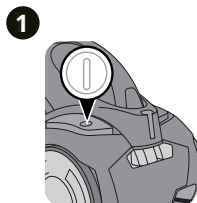


Figure 1

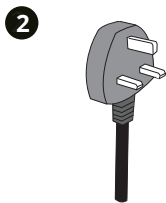


Figure 2

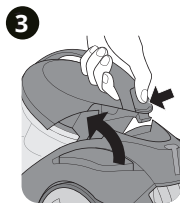


Figure 3

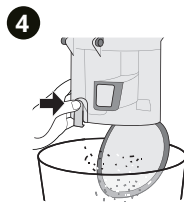


Figure 4

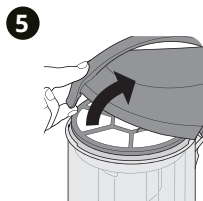


Figure 5



Figure 6



Figure 7



Figure 8

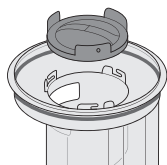


Figure 9



Figure 10

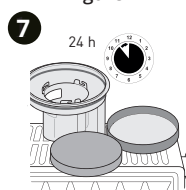


Figure 11



Figure 12

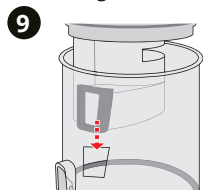


Figure 13

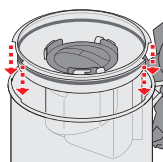


Figure 14



Figure 15

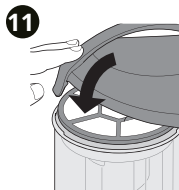


Figure 16

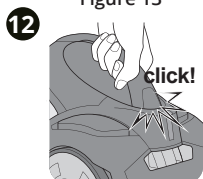


Figure 17

CAUTION: Never operate the appliance without the filters in place. Never operate the appliance with damaged filters.

MAINTAINING YOUR VACUUM CLEANER

CLEANING AND REPLACING THE HEPA POST-MOTOR FILTER

CAUTION: Clean the filter each time you clean the dust bin. Replace the filter if it is damaged. (See page 5 or the back cover for replacement part information.) The HEPA post-motor filter cannot be washed.

1. Switch off the appliance as shown in figure 1.
2. Pull the plug out of the plug socket as shown in figure 2.
3. Release the filter cover as shown in figure 3.
4. Remove the filter using the tab provided as shown in figure 4.
5. Tap out the filter over a dustbin as shown in figure 5.
6. Then brush out the filter with a soft brush as shown in figure 6.
7. Press the filter back into its housing until the removal tab audibly engages as shown in figure 7.
8. Attach the filter cover at the bottom first as shown in figure 8.
9. Lock the filter cover as shown in figure 9. The filter cover can be locked more easily if you hold the release mechanism and only release it when the filter cover is in its final position.

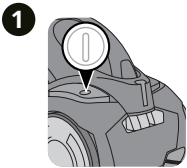


Figure 1

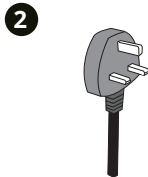


Figure 2

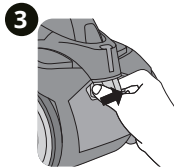


Figure 3

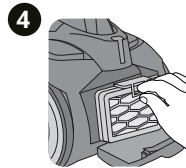


Figure 4



Figure 5



Figure 6

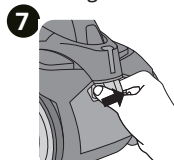


Figure 7

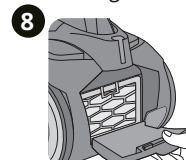


Figure 8



Figure 9

MAINTAINING YOUR VACUUM CLEANER

STORAGE

WARNING: Risk of injury! Always keep the appliance out of the reach of children.

To store the appliance:

1. Switch off the appliance after vacuuming shown in figure 1.
2. Wind up the power cord. When winding up the cord, keep the plug in your hand so that the cord does not thrash about and cannot injure you shown in figure 2.
3. Retract metal telescopic tube down to shortest setting for easier storage as shown in figure 3 and 4.
4. Insert floor tool into the main body of the appliance as shown in figure 5.

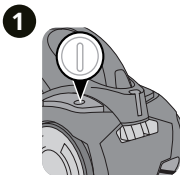


Figure 1

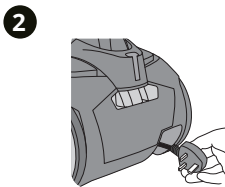


Figure 2

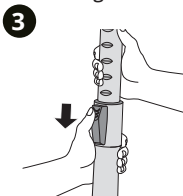


Figure 3

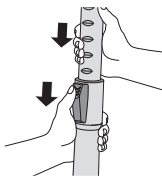


Figure 4

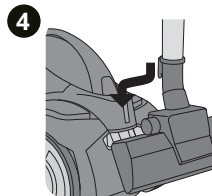


Figure 5

CAUTION:

- Never store directly next to heat sources e.g. heaters or ovens.
- Avoid exposure to direct sunlight.
- Keep the appliance and accessories in a cool, dry place where they do not take up too much space.
- If you intend to store the appliance for a longer period, empty and clean the dust bin and filter parts. (See Emptying bin and cleaning HEPA pre-motor filter section for more information.)

TROUBLESHOOTING

WARNING: Risk of injury! Never use a faulty appliance! To reduce the risk of shock and unintended operation, always switch off the appliance and disconnect it from the mains before starting troubleshooting.

Before contacting us, use the table below to check whether you can correct the problem yourself.

Problem	Possible Issue	Solution
The vacuum cleaner stops suddenly.	The overheating protection has tripped possibly due to blocked suction channels, filters or similar.	<ol style="list-style-type: none">1. Switch the appliance off and pull the plug out of the socket.2. Remove the cause of overheating e.g. by disassembling metal telescopic tube and hose and removing the obstacle and/or cleaning filters.3. Wait around 45 minutes until the appliance has cooled down.4. After the appliance has cooled, you may switch it on again.
The cleaning results are unsatisfactory despite the appliance working correctly.	The air slide is open.	Close the air slide. (See Assembling Your Vacuum Cleaner section for more information.)
The cleaning results are unsatisfactory despite the appliance working correctly.	The floor tool switch is in a position that is not appropriate for the floor.	Adjust the position of floor tool switch. (See Assembling Your Vacuum Cleaner section for more information.)

TROUBLESHOOTING

Problem	Possible Issue	Solution
The cleaning results are unsatisfactory despite the appliance working correctly.	The dust bin is full.	Empty and clean the dust bin. (See Emptying Bin and Cleaning HEPA Pre-Motor Filter section for more information.)
The cleaning results are unsatisfactory despite the appliance working correctly.	The filters are dirty.	Clean the filters. (See Emptying Bin and Cleaning HEPA Pre-Motor Filter section or Cleaning and Replacing the HEPA Post-Motor Filter section for more information.)
The cleaning results are unsatisfactory despite the appliance working correctly.	The nozzle, metal telescopic tube or hose is blocked.	Remove the obstruction. If necessary, use a long wooden stick (e.g. a broomstick) to do this.
The cleaning results are unsatisfactory despite the appliance working correctly.	The attachment used is unsuitable.	Change the attachment. (See Assembling Your Vacuum Cleaner section for more information.)

CONTACT US

In any other case or if the solution explained above did not solve the problem, please contact us at info@dirtdevil.co.uk

SPECIFICATION

Model	CY09
Power	800W
Capacity	2.7L
Weight	4.3kg
Hose length	1.5m
Cord Length	5m
Sound	80dB
Dimensions (LxWxH)	40 x 26 x 31.5cm
Filter type	HEPA
Input voltage	220-240V
Current	50Hz

WARNING: The above data has been supplied by the manufacturing plant and tested in laboratory conditions. The actual situation may vary according to the use environment. All product specifications are subject to change without notice.

DISPOSAL

Waste electrical products should not be disposed of with household waste. Please recycle where facilities exist. Check with your local authority for recycling advice.

UNBOXING

During transportation, packaging was used to protect the appliance against any damage. After unboxing, please dispose of all packaging in a way that will not cause damage to the environment.

IMPORTANT! During unpacking, keep the packaging material (polyethylene bags, polystyrene pieces, etc.) out of reach of children.

This appliance complies with the following UK & European Directives:

Electrical Equipment (Safety) Regulations 2016

Electromagnetic Compatibility Regulations 2016

Low Voltage Directive (LVD) 2014/35/EU

Electromagnetic Compatibility Directive (EMCD) 2014/30/EU





SPARE PARTS



Replacement parts below are available for your appliance model.
Please visit dirtdevil.co.uk to place your order.

Upholstery tool

- Part no. DVLS00079

Dusting brush

- Part no. DVLS00088

Floor tool

- Part no. DVLS00089

Hose

- Part no. DVLS00090

Metal telescopic tube

- Part no. DVLS00091

Dust bin

- Part no. DVLS00092

HEPA pre-motor filter

- Part no. DVLS00093

Inner cyclone lid

- Part no. DVLS00094

Dust bin top with handle

- Part no. DVLS00095

Front wheel

-Part no. DVLS00096

Back wheels (pair)

- Part no. DVLS00097

HEPA post-motor filter

- Part no. DVLS00098

HEPA post-motor filter cover

- Part no. DVLS00099

Cable with plug

-Part no. DVLS00100

Crevice tool

- Part no. DVLS00101

VISIT DIRT DEVIL WEBSITE

www.dirtdevil.co.uk

CONTACT US

0333 400 0653

info@dirtdevil.co.uk

Connect House,
Small Heath Business Park, Talbot Way,
Small Heath, Birmingham,
B10 0HJ
United Kingdom

This appliance has a 1-year warranty as standard. To extend your warranty for 1 additional year, please visit dirtdevil.co.uk and register your appliance.

Pictures are for illustration purposes only and may differ from the actual product. We are constantly striving to improve our products and the specifications contained herein are subject to change without notice. Made in China. DIRT DEVIL is a registered trademark of Techtronic Cordless GP and is used under licence by Connect Distribution Services Ltd.

Dirt Devil shall not be held liable for any damage caused by improper use of the product.